



**4 Bed
House - Link Detached
located in**


REDSTONES
The Property Experts

Century Drive
Willenhall
WV13 2JH



£299,000

A three/four bedroom link detached family home located close to shops, schools and local amenities. The accommodation comprises of an entrance hall, lounge, dining room, kitchen and cloak room. On the first floor and three bedrooms and family bathroom. Accessed via the garden is a self contained fourth bedroom/garden room with ensuite shower room. The property benefits from central heating, double glazing, front and rear gardens, driveway and garage.

Hall

UPVC double glazed door to front, carpet, radiator, stairs off, doors off.

Cloak Room

Frosted double glazed window to front, radiator, WC, pedestal corner wash hand basin.

Lounge

14'5" x 12'1"

UPVC double glazed window to front, carpet, radiators, fire place with electric fire, French doors to dining room.

Dining Room

10'5" x 7'10"

UPVC double glazed French doors to garden, carpet, radiator, under stairs storage cupboard, door to kitchen.

Kitchen

10'5" x 7'2"

Double glazed door and window to garden, tiled flooring, various wall units, splash back tiling, rolled edge worksurface with cupboards and drawers under, inset stainless steel sink, integrated oven and fitted four ring gas hob with extractor hood over, integrated washing machine and dishwasher, cupboard with wall mounted Baxi boiler.

Stairs / Landing

UPVC frosted double glazed window to side, carpet, cupboard with Boiler Mate 2000 Gledhill Integrated Thermal Storage, loft access, doors off.

Bedroom One

11'1" x 8'10"

UPVC double glazed window to rear, carpet, radiator, built in wardrobes.

Bedroom Two

11'9" x 7'10"

UPVC double glazed window to front, carpet, radiator.

Bedroom Three

7'6" x 7'2"

UPVC double glazed window to front, carpet, radiator, built in cupboard.

Bathroom

6'2" x 6'2"

UPVC frosted double glazed window to rear, carpet, radiator, WC, pedestal wash hand basin, bath with shower screen and mixer shower over.

Bedroom Four / Garden Room

8'6" x 8'6"

Being accessed via garden with UPVC double glazed window, carpet, door to ensuite.



Ensuite

WC, pedestal wash hand basin, shower cubicle with mixer shower.

Garage

13'9" x 8'10"

Concrete floor, up and over door.

Outside

Enclosed rear garden with patio, lawn and gated access to front.

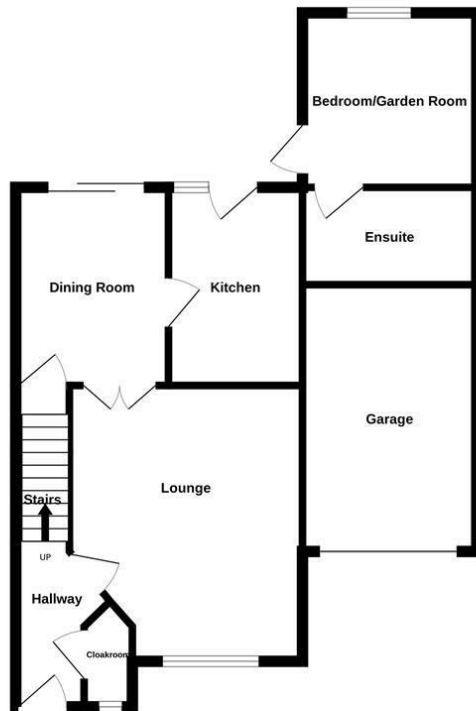
To the front there is lawn and driveway leading to the garage.



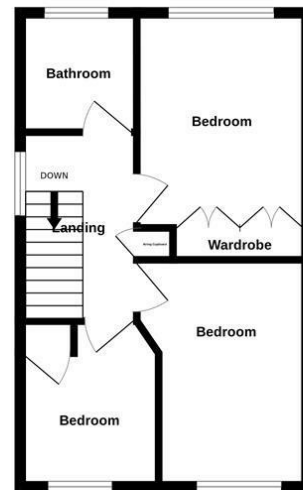




Ground Floor

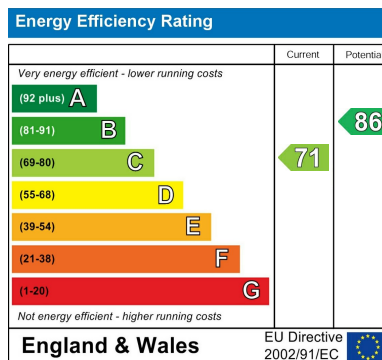


1st Floor



1 Century Drive Wv13 2jh

Measurements are approximate. Not to scale. Illustrative purposes only.
Made with Metropix ©2023



DIRECTIONS

CONTACT

West Midlands House
Gypsy Lane
Willenhall
West Midlands
WV13 2HA

E: info@redstones.co.uk
T: 01922 235 350
<http://www.redstones.co.uk>


REDSTONES
The Property Experts